

ERTEC Environmental Systems

Protecting Global Lands and Waterways™

Case Study

S-Fence™

Perimeter Protection

GR-8 Guard™

Drain Inlet Protection



- > Lower Project Costs
- > Better Performance
- > ZERO Waste
 - ✓Recycled
 - ✓Reusable
 - ✓Recyclable



Application:

Road Construction—Perimeter Protection

Product:

ERTEC S-Fence™ & ERTEC Drain Inlet Protection

Owner:

Caltrans District 04

Contractors:

R & L Brosamer (Prime), Green Vista Landscaping (Sub)

Project:

Doyle Drive—GG Bridge Approach

Project Date:

2010 and ongoing

S-Fence™ is a **high performance, low total cost and ZERO waste** system for construction sites which:

- Significantly reduces off-site sedimentation.
- Typically cuts first project costs by 50%.
- Better than ZERO Waste. (Recycled, Reusable, Recyclable).
- Solves silt fence problems by allowing water flow-through while filtering. Limits water back-up which causes undermining and fence toppling.



The project is located alongside San Francisco Bay

The Challenge: The current best practice is to use traditional silt fence to keep sediment from moving off-site. Unfortunately, it is common to see silt fence topple in the wind, break down in UV light or allow ponding and undercutting during storms. Road Construction projects often last 18 months or more and it is typical for a large percentage of the silt fence installation to require maintenance or even complete replacement. Estimators often overlook the cost of silt fence maintenance, removal and waste handling. Proper installation, removal and disposal is costly. On multi-phase projects, it is also desirable to relocate and reuse the BMP as construction progresses, rather than dispose and start a new phase with new materials.

Results:

“Regular old silt fence was installed first when the project began and we endured the usual problems. We converted to ERTEC S-Fence™ which solved the issues we were having. I now recommend it to all engineering consulting firms I work with and am specifying it on all my projects. I appreciate ERTEC’s innovative approach – they make me look good.” - Lucinda Dustin, Owner, Mudhen Environmental

“Despite higher up front material costs, I know I saved money on this project already with ERTEC and most importantly, its less effort for me to keep my site in compliance.” - Bill Faoro, Project Manager, R & L Brosamer Inc.

“This stuff is easy to work with but also easy on our labor force due to its light weight and ease to transport in and around the job site.” - Tim Jones, Estimator & Project Manager, Green Vista Landscaping



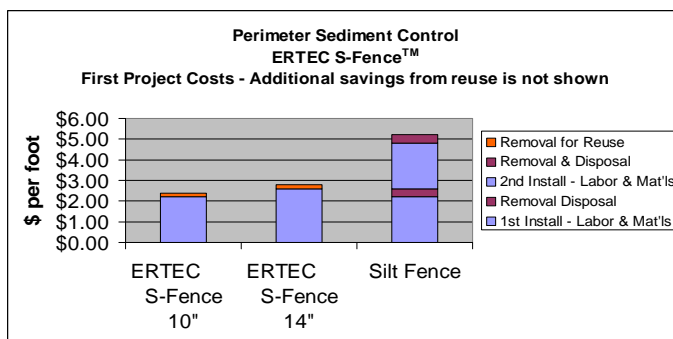
S-Fence™ - protection at base of slope



ERTEC GR8 Guard™
Drain Inlet Protection

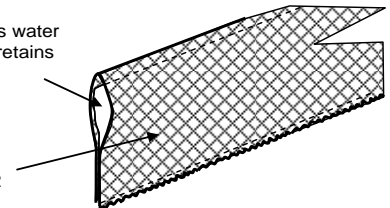


S-Fence 20" installed on both sides of concrete V-Ditch



Particle filter allows water flow-through, and retains soil particles

HDPE outer jacket 8,000 openings per yd²



©2011 ERTEC Environmental Systems

1150 Ballena Blvd. Suite 250, Alameda, CA 94501

phone: 510-521-0724, fax: 510-521-3972

sales@ertecsystems.com, www.ertecsystems.com