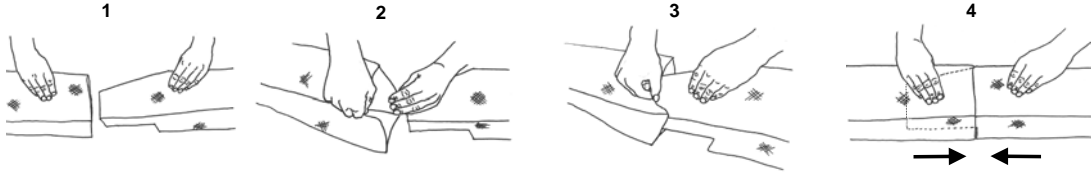




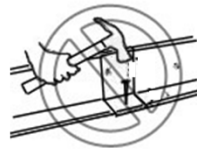
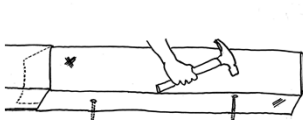
ERTEC® Environmental Systems

Protecting Global Lands & Waterways™

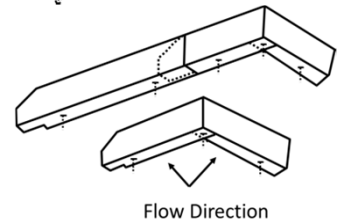
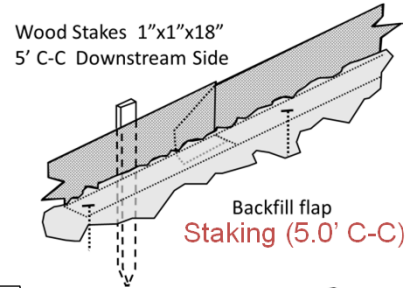
ProWattle: Installation Guidelines



Interconnecting segments (butt segments together tightly)



Anchoring with 6" Nails (2 per segment, 3.5' C-C)



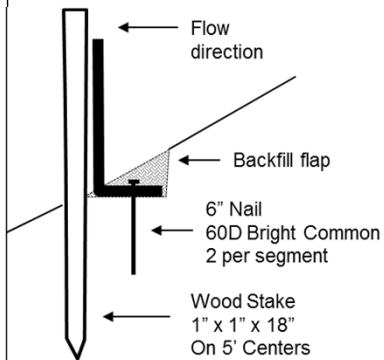
To bend or dogleg - slit flap



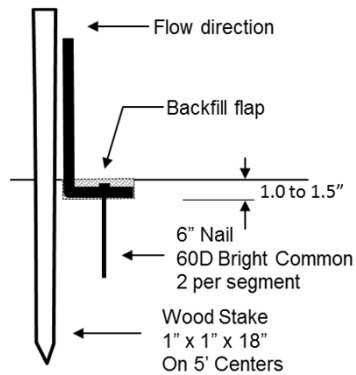
Slope Stabilization

Placement on slope, on contours:

Slope	Separation
1:2 and steeper	10 feet
1:2 to 1:4	15 feet
1:4 to 1:10	20 feet
1:10 and flatter	50 feet



Perimeter Protection



Check Dam

