

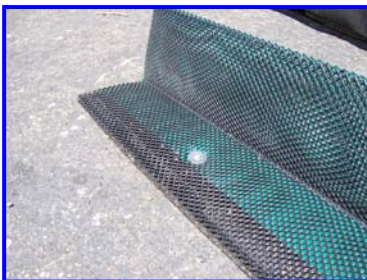
# ERTEC Environmental Systems

Protecting the Integrity of Global Lands and Waterways™

## Case Study Hard Surface Guard™



- > Lower Project Costs
- > Better Sediment Retention



**Application:** Coal Fired Power Plant: Perimeter Protection  
**Product:** Hard Surface Guard™  
**Location:** Stockton, California  
**Customer:** FPL Energy—Port of Stockton District Energy Facility (Posdef)  
**Installation:** June 2008-Ongoing

### Hard Surface Guard:

- Is a BMP system designed to seal to hard surfaces to keep debris, soil or other particulates from moving off-site.
- Allows water flow-through and significantly reduces water velocity while providing particle and debris filtering
- Is made from durable and recyclable HDPE
- Is durable or reusable for 4+ years

### The Challenge:

- During the previous storm seasons, Posdef used fiber rolls around the plant perimeter in an attempt to keep coal dust, debris and other particulates from flowing off the site during rain storms. This was found to be unacceptable by local inspectors. Not only did fiber rolls need frequent replacements, they cannot adequately seal to the asphalt surface, and allow contaminated water to flow underneath and off the site.

### The Solution and Results:

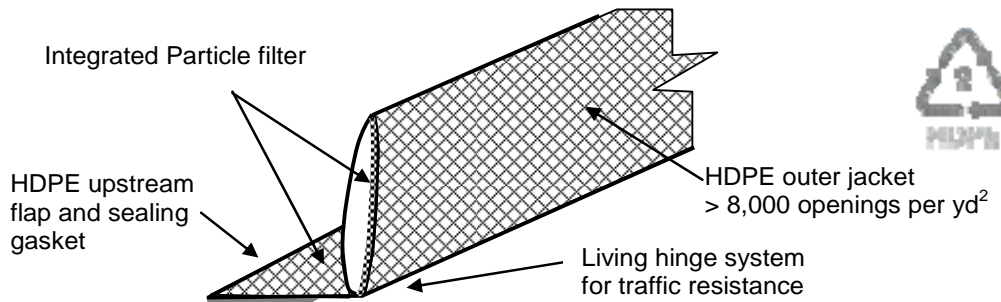
- Hard Surface Guard was anchored with masonry nails driven with a powder charge-nail gun. Installation is very quick. Expected life is more than 4 years.
- Solids in rainwater run-off to the street and eventually to the storm drain were significantly reduced.

### Customer Notes:

- "During this storm season the local inspector was positive about our site conditions and the ERTEC perimeter protection material. I was very pleased with the ERTEC performance. It looks like we have good multi-year, low cost, high performance solution." Doug Hale — Facilities Manager—Posdef Power

### Proven Results

- Time and again, ERTEC has delivered lower total cost and better sediment and particulate control



## ERTEC Environmental Systems

1150 Ballena Blvd. Suite 250, Alameda, CA 94501, phone: 866-521-0724, fax: 510-521-3972  
[sales@ertecsystems.com](mailto:sales@ertecsystems.com), [www.ertecsystems.com](http://www.ertecsystems.com)