

ERTEC® Slot Guard™ - Installation Guide - For slotted or trench drain inlets with grates in paved areas

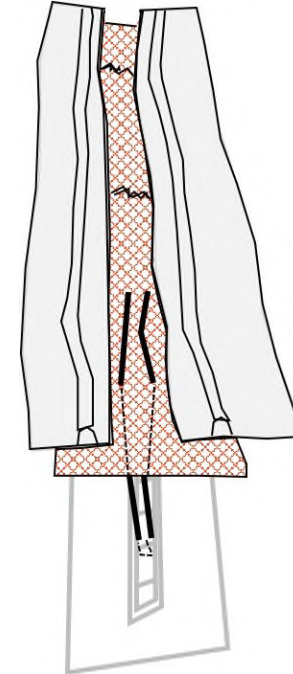
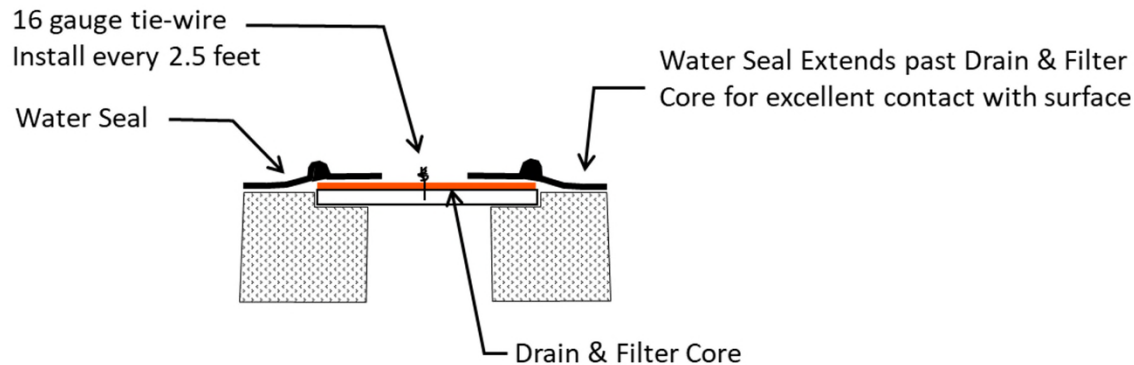
Installation Notes

- 1. Placement:** Select correct size (Table 1). Lay the Slot Guard™ on top of the slot or trench drain grate. For safety, assure that grate is in place. Do not remove grate.
- 2. Anchor method:** Attach with 16 gauge tie wire every 2.5 linear Feet (Fig 1). Cut wire to 12" lengths. Feed one end of wire down thru Slot Guard™, around grate bar, and back-up thru Slot Guard™. Above ground, pull tight and twist wires several times. Cut off excess and bend twisted nub down
- 3. Overlap:** Slot Guard™ segments overlap for long slot/trench drains.
- 4. Clean:** Accumulation of leaves, debris and sediment can cause backups! Clean after every storm or as necessary.
- 5. Protect:** In stop and go traffic areas where exposed to constant tire abuse, it is useful to place traffic cones or delineators on or near Slot Guard to discourage run-overs. Slot Guard™ works well with periodic run-overs, but does not survive long in constant stop and start traffic.

Table 1

Slot/Trench drains up to:	SG Size
6" width	SG 84x06
12" width	SG 84x12
15" width	SG 84x15
20" width	SG 84x20

Fig. 1



Maintenance: Perform maintenance as required. Inspect following rainfall events and at least daily during prolonged rainfall. Maintain to provide an adequate sediment holding capacity. Debris shall be removed daily and sediment shall be removed when the sediment accumulation reaches 50% of the barrier height. Removed sediment shall be incorporated in the project at designated locations.

Important: All information, including illustrations, is believed to be reliable. Users, however, should independently evaluate the suitability of each product for their application. ERTEC Environmental Systems makes no warranties as to the accuracy or completeness of the information, and disclaims any liability regarding its use. ERTEC Environmental System's only obligations are those in the ERTEC Environmental Systems Standard Terms and Conditions of Sale for this product, and in no case will ERTEC Environmental Systems or its distributors be liable for any incidental, indirect or consequential damages arising from the sale, resale, use or misuse of the product. Specifications are subject to change without notice. In addition, ERTEC Environmental Systems reserves the right to make changes without notification to Buyer, to processing or materials which do not affect compliance with any applicable specification.



U.S. and International Patents and Pending Patents Apply
©2009-2018 ERTEC Environmental Systems

File Name:
ERTEC – Installation Guide – Slot Guard.pdf

Scale:	Default Print Size:	Page:
None	8.5"x11"	1 of 1